

International Association of R.S. Prussia Collectors, Inc.

R.S. PRUSSIA

I.A.R.S.P.C. Inc.

OCTOBER 2006



Convention 2006



In This Issue

- 2 President's Message
- 4 Treasurer's Report
- 6 Minutes from the Meetings
- 8 Convention Board Meeting Minutes
- 9 Post Convention Board Meeting Minutes
- 11 Ice Cream Social
- 13 Collecting, A Family Affair
- 16 Room to Room Viewing
- 19 Photo Gallery Special
- 23 2006 Convention Auction Results

The International Association
of R.S. Prussia Collectors, Inc.
Visit Us At
www.rsprussia.com

President
Terry Coy, Kentucky
502-244-5391
user258442@aol.com

Vice President
Allen Di Marco
570-547-8113
ajdgld@aol.com

Secretary
Karla Hartzheim
262-642-5460
rhartzheim@wi.rr.com

Richard Hartzheim
262-642-5460
rhartzheim@wi.rr.com

Past President
George Kandel, Indiana
260-868-5263
vinmark@fwi.com

Directors
Miriam Corban, New Zealand
64-9-838-8947
orchids@xtra.co.nz

Richard Habenicht, Illinois
815-838-8456
reed1021@comcast.net

Grady Hite, North Carolina
336-924-8657
ahite@triad.rr.com

Joy Litteral, Ohio
937-666-5481
CJ-Antiques@Columbus.rr.com

Linn Schultz, Iowa
563-678-2658
lschultz@netins.net

John Titus, Iowa
563-785-4438
imagesinink@iowatelecom.net

Historian
Mary Lou Bougher, Kentucky
502-247-7155
mlkbougher@msn.com

Web Page Editor
Ken Jinde, Canada
kenj89@rogers.com

Newsletter Editor
Linda Titus, Iowa
Phone 563-785-4438
Fax 563-785-4673
P.O. Box 983
Durant, IA 52747-0983
imagesinink@iowatelecom.net

Notes from the President

Terry Coy

I WOULD LIKE TO THANK YOU for the confidence you have placed in me to serve as your President for the next two years. I will do my best to move the organization forward, with your help, of course.

Each one of us, as a member, must also be involved in the progress of the organization. With that being said, any ideas that you may have in moving the organization forward in growth, either e-mail or put in writing and send to me. Please put a lot of thought into it and how the idea will work, before sending it on to me.

Wasn't this year's convention a great one that we had in Michigan! The entire Michigan group did a fantastic job in hosting it. A THANKS to all who were involved. Freda Mott and Beth Vandermeer were the driving force to see that all went well. Everything from the hospitality room to the entertainment was well planned. As we all know, the entertainment was well received. I heard many positive comments about the comedienne, magician. Some even said, "could we have him again next year?"

The seminars given by Lee Marple and Ken Bougher were very well received and attended. Thanks to both of you for your informative presentations and the

work that you put into them.

The fellowship, with the discussions, laughter and stories, was one that I have not seen in a while. The entire group seemed to be having a great time from Harold Dodds, keeping the hallways in check, and Tim Nance, with his chicken clucker entertaining everyone.

Howard Greenbergs Do-It-Yourself Auction had another great year with the proceeds being over \$3,000. With the donation from Georgenia Stewart, in memory of Joyce Williams, that item alone brought in \$1300.

The Brown Auction Company presented the auction this year with some very nice items. They also gave a donation of \$2000 to the organization.

It was great to see the enthusiasm with the new members and first attendees at this year's convention.

Remember it is each and everyone's responsibility to move this organization forward.



Newsletter Policy

This newsletter is the voice of the members of the International Association of R.S. Prussia, Inc. We welcome articles from members. We ask that articles be constructive and contribute positively to the welfare of the club and its members. The newsletter is printed four times a year. Publication mail dates are February 15, April 15, June 15, and October 15. Articles submitted for publication are due to the editor by the 15th of the month prior to publication and are subject to editing. (For example, items for the April issue would be due by March 15th) We look forward to hearing from you!

Letter from the Editor

Linda Titus

DEAR MEMBERS, Convention is long over but hopefully it is still fresh in your minds. We had a great convention and many new ideas were passed around. The ideas of interest to me, of course, would be those concerning the newsletter. It is always difficult to get the newsletter out when we do not have articles to publish. Many ideas were presented to get members interested in submitting articles and I have a few of my own. One idea is to feature certain scenes, molds or shapes each issue, another is personal stories involving members and how they got started collecting R.S. Prussia. Both are great ideas but involve writing, which most member shy away from because they feel they just don't have the talent to write. I would like to stress that this fear should be abandoned. Please do

not worry about lack of talent in the writing department; jot the information down and we will do our part to make it presentable to the membership. We all love to hear the stories on how members came upon special pieces or how they got started, so please don't let your fear of writing keep you from telling the story.

I also think it would be nice to have a photo gallery section, where members can just submit photos of their collection to share with other members. You do not have to write anything, just send photos. Everyone loves to look at the pictures!

For the February edition of the R.S. Prussia newsletter, I would like members to submit articles featuring sets. To define the term "sets," I am looking for collections where members have tried to complete a set of dishes in

which you could set a pretty table and match it up with some table linens and stemware. It is fun and challenging to put together a set; the hunt is fun and it gives you a reason to stop at every antique store on every path you take. Please do not hesitate to call me for help on the article and please don't forget to include photos. You can email your articles and photos, but those of you who do not feel computer savvy can use photos and the US Postal service to send me the article.

I look forward to receiving articles and information from our members. Please encourage those members you know who would have articles of interest and maybe even help them out a little. Everyone has a good story waiting to be told!

Until next issue,
Linda

Notes from the Secretary and Treasurer

Dick and Karla Hartzheim

WOW THE CONVENTION is over and we all have "new" jobs. Much to learn and much to do. Linn and Leslie are excellent mentors and shared so much with us. We truly appreciate their efforts. We will try to do as good as job as they have done over the last four years. We hope all of you will be patient with us during this time of transition.

As we move into the fall season you might want to think about taking care of your membership renewal before the holidays are upon us. New and renewal memberships are **\$30.00**. Checks should be made out to the International Association of RS Prussia Collectors.



**RENEW
TODAY!**

Your check can be sent to:

**International
Association of
RS Prussia Collectors, Inc.
P.O. Box 583
Mukwonago, WI 53149**

Any and all early renewals will be greatly appreciated. Again, a great big **THANK YOU** to Linn and Leslie Schultz for all they have done as secretary and treasurer.

2007 COMMITTEES

Nominating Committee

Bob Yaklin, Chair
Scott Davidson
Harold Dodd

Auction Committee

Allen Marcus, Chair
Brad Witt
Rich Habenicht

Audit Committee

Carl Tackett, Chair
Joe Lemon
Ed Smith

Historian

Mary Lou Bougher

Congratulations Raffle Winners

The following lucky members were the 2006 raffle winners:

Free Nights in Hotel

John and Peggy Imboden
Marion, Ohio

Bob and Mary McCaslin
Avon, Indiana

International Raffle

Wanda Faye Krick
Tullahoma, Tennessee

C.L. Riley
Holton, KS



Michigan Club Raffle

Carolyn Battle
Nolensville, Tennessee

Marsha Waterbury
Wichita, Kansas

Gena Munsell
Katy, Texas



Thanks



to Mary Frank Gaston,
Rich Habenicht,
Georgina Stewart,
Grady Hite
and the Michigan group
for their generous
donations this year
that financially helped
the organization.

Treasurer's Report

Financial Statement June 1, 2005 to May 31, 2006

Beginning Balance June 1, 2005		\$29,285.26
Income		
Convention '05	Auction	\$3,660.00
	Registration	\$6,458.95
	Raffle	\$1,565.00
	Do it yourself auction	\$3,325.00
	Conv refund	\$291.67
	Members dues	\$12,750.00
	Interest	\$672.71
Total Income		\$28,723.33
Expenses		
Convention '05	Meeting rooms & banquet	\$4,130.00
	Entertainment	
	Scrapbook	
	Free room drawing	\$375.00
	Refunds	\$80.00
	Web service	\$100.00
	Travel & office	\$1,245.82
Printing	Newsletters	
	(4) P,P&L	\$14,124.52
	3 association ads	\$781.73
	Convention supplies	\$876.56
Member cards	& brochures	\$562.95
	Dues reminders	\$289.50
Postage	General postage	\$320.55
Miscellaneous	Bond, Lic. PO Box,	
	Acc Dues	\$135.00
Convention '06	Raffle (2)	
	Banner	\$50.69
Hospitality room		
Entertainment		
Total Expenses		\$23,072.57
Net Change		\$5,650.76
Ending Balance May 31, 2006 ck&cd		\$34,936.02

Welcome Meeting

Friday, July 28, 2006

THE WELCOME MEETING was called to order by President George Kandel at 9:00 a.m. George introduced all officers, board members, newsletter editor, web site editor and historian.

George thanked the board and officers for all the help and assistance during his term as president, especially this past year.

A moment of silence was held for the following club members who have passed away since our last convention. They are Don Wilhelm, Indiana; Barbara Elliot, Ohio; Brooks Smith, Missouri; Joyce Williams, California; Marge Johnson, Nebraska.

Terry Coy, Vice President, took a roll call of the states and had members stand from their home state.

The Michigan Club was introduced and thanked all persons who helped with the committees and hospitality, Freda Mott is chairperson, Beth Vandermeer is hospitality room chairperson.

Jane Stork, Nomination Committee chairperson, introduced her committee consisting of Allen DiMarco, Frank Huber and Bob McCaslin. As of this time she announced the following candidates for election: President, Terry Coy, Kentucky; Vice president, Allen DiMarco, Pennsylvania; Secretary and Treasurer; Karla and Richard Hartzheim, Wisconsin; Directors: Grady Hite, North Carolina and Rich Habenicht, Illinois are up for reelection. New candidates are; Bea Gatewood, Michigan; Ken Newcomer, Pennsylvania; and Linn Schulz, Iowa. If anyone would like to volunteer or know of anyone who would be interested in these

positions, see Jane. The floor will be open for nominations at the Saturday business meeting before the election is held.

The Audit committee consisting of Carl Tackett, Ed Smith and Bob Yaklin will report at the business meeting on Saturday.

The Auction committee includes Joeleen Passow, Brad Witt and Marvin Heard. Brad Witt gave a brief summary of what the auction committee does. They try to get a rounded auction that will appeal to everyone. They pick by pictures that are submitted by the auction company. They had a difficult time getting a collection.

Our auction this year is a collection found by Scott Brown Auctions. George found Scott very easy to work with. Scott and his wife Sue are also club members. Scott was thanked for a very nice auction display.

George then thanked all committee members he has

worked with over the past four years of his presidency.

The explanation of the different color name tags are: Board, green; new member, pink; general membership, blue; host club, purple.

The Howard Greenburg Do-It-Yourself Auction over the past 12 years has raised \$32,500 for the club. Howard recognized all contributors for this auction. The auction this year is dedicated to Joyce Williams. Joyce has been a generous contributor over the years. He named Tim Nance honorary chairman for the auction. A piece for the auction this year was donated by Georgina Stewart, Nevada, in memory of Joyce Williams.

The president recognized all past presidents, Bob McCaslin, C.L. Riley, Mary McCaslin, and Jenny Lou Huston.

All authors were recognized as well, they are: John Titus, Lee Marple, C. L. Riley, Eileen Barlock, Mary McCaslin and Mary Frank Gaston. These authors are club members. Mary Frank Gaston donated books which are for sale at the registration desk with the proceeds to go the club. Allen Marcus indicated he is thinking of doing a book on E.S. and wondered if there would be any interest, if so indicate by a show of hands.

Terry Coy commented on the lack of articles for the newsletter. Articles are needed from the general membership not just the board to put together a good newsletter. Miriam Corban went through an article she did for the newsletter entitled "How to write an article for a newsletter." Terry thanked all of those who have sent articles.

George announced that food will be provided by the hotel before the auction this evening.

Thanks to Ida Parrott who sent California raisins and recipes, both of which are in the hospitality room.

Fred Kunz, Illinois Club, announced we will be in Peoria in 2007 at a Ramada Inn for \$79 per night plus breakfast.

Tim Nance, Florida, gave a very humorous presentation on being an "RSP Addict." Hopefully he will make this a newsletter article.

Mary Lou Bougher, flag lady and historian, explained the room flags and also that albums from previous conventions are available to look through in the hospitality room.

The meeting was adjourned at 10:30 a.m.



We Need You

Did you enjoy the convention?

Did you renew old friendships?

Did you learn anything about RS at the convention?

Did you share some of your knowledge at the convention?

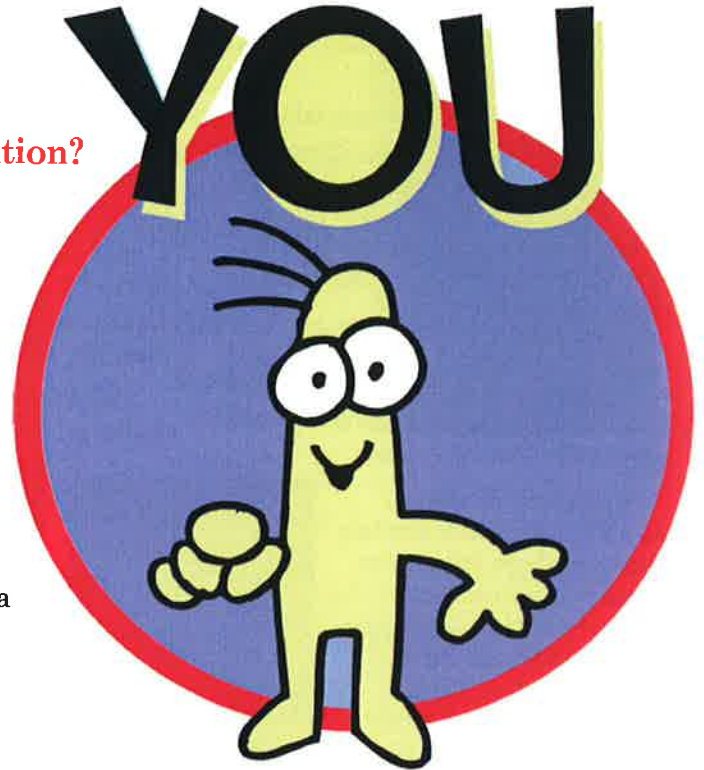
All of us attend the convention for at least one of the above reasons. Many of us enjoy all of these opportunities.

Now it is your turn to do your part. We need one more volunteer to present a workshop to round out the "education" portion of next year's convention. Please consider sharing your knowledge of RS with us. Yes, you are an "expert" and yes, you can do it!

We need some new people to share in the excitement of keeping our club viable and active. Don't

pass up this opportunity to help ensure our club's continued success.

Please notify **Allen DiMarco** by phone at (570) 547-2113 or e-mail ajdgld@aol.com if you have questions or a desire to help.



Minutes from the Meetings

First time and new members meeting
Thursday, July 27, 2006



President George Kandel welcomed all new and first time attendees to the 21st annual R. S. Prussia Collectors, Inc. Convention.

All officers and board members were introduced, including Linda Titus, Newsletter Editor and Ken Jinde, Website Editor.

The convention schedule and room viewing was explained and the importance of wearing name tags at all times was stressed. The different colors of the name tags were explained.

Mary Lou Bougher, Flag Lady and Historian, explained the room flags and what they represent.

The Howard Greenburg Do-It-Yourself Auction was explained to all attendees.

The seminars available were discussed. They will be held Friday and Saturday.

Everyone was invited to the ice cream social immediately following this meeting.

Room visitation times will be announced at the business meeting on Saturday. Please ask permission to handle china in the individual rooms.

Meeting was adjourned at 7:30 p.m.

Business Meeting

Saturday, July 29, 2006

THE BUSINESS MEETING of the 21st annual convention of the International Association of R.S. Prussia Collectors, Inc., was called to order by George Kandel, IN, at 9:00 a.m. All officers and board members were present. Also present were Linda Titus, Newsletter Editor and Ken Jinde, Web site Editor. George expressed his appreciation to all the officers and board members for all their cooperation during his term as president.

Howard Greenberg reported that the Do-It-Yourself auction made a profit of \$3,842. This auction has been a great success over the years. The auction has brought in over \$36,000 over the last 13 years. The piece donated by Georgina Stewart, NV, in memory of Joyce Williams brought \$1,300. Howard thanked all who helped make this auction a success.

The Michigan Club thanked everyone who helped make the convention a success. A special thanks to Freda Mott and Beth Vandermeer who served as chairperson and hospitality chairperson respectively, for a job well done.

Jane Stork, nomination committee chairperson, assisted by Allen DiMarco, Frank Huber, and Bob McCaslin, presented the slate of candidates up for nomination. They are, President, Terry Coy, KY; Vice President, Allen DiMarco, PA; Secretary/Treasurer, Richard and Karla Hartzheim; Directors, Grady Hite, NC and Rich Habenicht, IL are up for reelection, Bea Gatewood, WI; Ken Newcomer, PA; Linn Schultz, IA. The floor was opened for nominations. A nomination was for Fred Kunz, IL for Vice President. A motion was made to close the nominations by Annette Hite and seconded by Dale Rothrock. All candidate were given

a chance to tell something about themselves, how long collecting, how long a club member, etc.

The secretary's reading of the minutes was approved as read.

Scott Brown presented a check for \$2,000 to the club from the auction. Scott thanked everyone for their auction attendance.

The Treasurer's report was as follows: Beginning balance on June 1, 2005 was \$29,285.26. Ending balance as of May 31, 2006 was \$34,936.02. Linn reported that this does not reflect the true balance because of bills that still need to be paid for the convention, auction proceeds, books sold and mugs sold. A motion to accept the treasurer's report as given was made by Arden Hetlevet and seconded by Bob Yaklin. Motion carried.

The secretary reported that our total convention registrations are down again this year. We had a total convention preregistrations of 108, total convention registration, 136, new members 39, dues not renewed 59, and total memberships for 2006 are 443. The total convention attendance was 251. Deceased since the 2005 convention are Don Wilhelm, IN; Barbara Elliot OH, Brooks Smith, MO; Joyce Williams CA; and Marge Johnson NE. The Mary Frank Gaston books donated sold for a total of \$320. There are still some books left if anyone is interested. If anyone needs more brochures to hand out, see Linda Titus or Leslie Schultz. More brochures will be printed with the name and address of the new secretary/treasurer. Lee Marple will help with some history to go into the new brochure. A motion to accept the report as given was made by Sue Houseman, seconded by Selma



Greenberg. Motion carried.

Ed Mott, Michigan Club, thanked George Kandel for the friendly atmosphere he has brought to the club during his term as president and vice president.

Terry Coy announced the room viewing times for this afternoon. He also reported that the money Jim Wroda donated to go toward advertising was used to advertise the convention and the club in various publications around the country.

Tim Nance suggested that people might want to ask auctioneers in their area to put the brochures at their sales to help promote the club. Terry will talk with some auctioneers.

Ken Jinde and Leslie Schultz will work together to update the website in the hope of drawing some younger members. See Terry with any other suggestions on this.

It was suggested that some of the reasons people are not renewing memberships are; age, illness, distance. A questionnaire will be handed out to everyone following the meeting.

Jane Stork announced the results of the election. They are President, Terry Coy, KY; Vice president, Allen DiMarco, PA; Secretary/Treasurer Richard and Carla Hartzheim, WI; Directors, Rich Habenicht, IL; Grade Hite, NC; and Linn Schultz, IA.

The meeting adjourned at 10:20 a.m.



Convention Board Meeting Minutes

Thursday, July 27, 2006 • 10:00 a.m.

R.S. Prussia Convention, Novi, Michigan

Members Present:

George Kandel, IN. President
Terry Coy, KY. Vice President
Leslie Schultz, IA. Secretary
Linn Schultz, IA. Treasurer
Theresa Newcomer, PA
. Recording Secretary
Linda Titus, IA. Newsletter Editor
Ken Jinde, CANADA. Web Site Editor
Joy Litteral, OH. Board Member
John Titus, IA. Board Member
Miriam Corban, NEW ZEALAND
. Board Member
Rich Habenicht, IL. Board Member
Grady Hite, NC. Board Member
Faye Krick, TN. Board Member
Jenny Lou Huston, TX. Board Member
Jane Stork, TX
. Nomination Committee Chairperson
Beth Vander Meer, MI
. Michigan Club Representative
Fred Kunz, IL
. Illinois Club Representative
Members Not Present: NONE

Call to Order

A. Welcome

President George Kandel called the meeting to order at 10:00 a.m.

B. Minutes from the last board meeting.

The minutes from the last board meeting, July 31, 2005, were read. Discussion and concerns were brought before the board.

Old Business

A. Complimentary Rooms

At our last board meeting of the 2005 convention, Linn Schultz made the following motion. "Complimentary rooms provided in the hotel convention contract will be distributed in the following order and for the stated number of days: President, 5 days; Vice President, 5 days; Treasurer/Secretary, 5 days; Newsletter Editor, 2 days; Recording Secretary, 2 days; Host Club 4 days; Speakers, 1 day each; Free Night's Stay Drawing 1 day (2 each). Days not covered by hotel comp rooms will be covered by the Association."

Moved by Linn Schultz, seconded by Grady Hite to amend by striking 2 days for the newsletter editor and changing it to 3 days. Amendment carried. Joy Litteral moved to accept, Wanda Faye Krick seconded. This is all in compliance with the IRS and our non-profit status. We

are not changing by-laws, but redefining the policy of the board.

B. Newsletter

Linda stated that the newsletter has always been on a quarterly basis, she just wanted to move the months to be on a true quarterly basis. A motion to accept the corrections was made by Linda Titus and seconded by Grady Hite. Motion carried.

C. Financial Report

Linn Schultz presented the financial report. The figures are not a true comparison, some expenses are not showing at this time. We are ahead of last year by a small amount. About \$800 was spent on advertising, but did not see a lot of difference as of yet. Linn has funds in order to hand over to new treasurer. There were no questions on the report. A motion to accept the treasurer's report was made by Grady Hite and seconded by John Titus. Report accepted.

D. Secretarial Report

The secretary reported a total of 436 members for 2006. 37 new memberships; 63 did not renew; pre-registration for 2006 convention was 108 and gained 15 since Wednesday for a total of 123. Leslie gave a total breakdown on membership and felt that location does not necessarily bring in more members. Some things that might affect attendance at convention are easy access to airports and shuttle service of hotels.

We had five deceased members since the 2005 convention. They are: Don Wilhelm, IN; Barbara Elliot, OH; Brook Smith, MO; Joyce Williams, CA; and Marge Johnson, NE. A motion to accept the secretary's report was made by Wanda Faye Krick and seconded by Linda Titus.

E. Advertising Money

Linda Titus was asked how the money that was donated by Jim Wroda for advertising was used. This will be addressed at the Business meeting on Saturday.

New Business

A. Nomination Committee

Jane Stork reported that as of today the following candidates are: President, Terry Coy Kentucky; Vice President, Allen Di Marco, Pennsylvania; Board of Directors, Ken Newcomer, Pennsylvania; Bea Gatewood, Michigan. Grady Hite, North Carolina, and Rich Habenicht, Illinois are up for re-election. The nominations will be opened to the floor with permission from the individual. There should be at least 2 candidates for each office, but it is difficult to find individuals who are willing to do the job.

B. 2007 Convention in Peoria, IL

Fred Kunz of the Illinois Club reported on the 2007 Convention. The hotel has changed hands and is now a Ramada Inn. They have a shuttle service. It is not the same hotel as we were in before. It will be a rate of \$79 including 2 breakfasts per room. Negotiations are still in progress.

C. Central Convention Location

The possibility of a central location for the convention was discussed. After discussion it was decided there is no common answer to have a central location. There are too many factors involved.

D. 2008 Convention

The Kentucky/Tennessee Club will be our hosts in 2008 at a Marriott Hotel in Louisville. They have a contract including free breakfast for \$102 a night. There is a nice setup for the hospitality room at this hotel.

E. 2009 Convention

Ohio is asking to host the 2009 Convention in Columbus. John Imboden said they are looking at an Embassy Suite Hotel just outside of Columbus in Dublin. It is not far from the airport.

F. Newsletter

Linda Titus, Editor of the newsletter, said that it is getting more difficult to put the newsletter together. She needs articles not only from board members, but the general membership as well. Articles are especially needed in the January, April and July newsletter. Discussion followed regarding possible ways to get articles.

G. Web Site

Ken Jinde would like to have articles forwarded to him for the web site. He reported that the web site is free to the club. The guest book is a problem with a lot of junk emails coming in. Ken is monitoring what goes into the guest book. He screens all the e-mail that comes in, then forwards these emails into the guest book. Ken would like help to improve the web site with pictures and articles.

Announcements

- Raffle/Do-It-Yourself Auction: Two RSP pieces were donated by club members for the raffle. Approximately \$400 worth of tickets has been sold as of this meeting. Georgina Stewart of Nevada donated a piece to be auctioned at the Do-It-Yourself Auction. This piece was donated in memory of Joyce Williams.
- Breakfast on Sunday: The breakfast will be from 7:30 to 10:30 a.m. on Sunday. The cost is \$5.00 per person.
- Newsletters/Mugs: There are old newsletters and mugs in the hospitality room. They are free.

Post Convention Board Meeting Minutes

Sunday, July 30, 2006 • 7:30 a.m.

R.S. Prussia Convention, Novi, Michigan

Members Present:

Terry Coy, KY. President
Allen Di Marco, PA Vice President
Karla Hartzheim, WI. Secretary
Richard Hartzheim, WI. Treasurer
Linda Titus, IA. Editor
Ken Jinde, CANADA Web Editor
Joy Litteral, OH. Board Member
John Titus, IA Board Member
Miriam Corban, NEW ZEALAND
. Board Member
Rich Habenicht, IL. Board Member
Grady Hite, NC Board Member
Linn Schultz, IA.
. Board Member/Outgoing Treasurer
George Kandel, IN
. Board Member/Outgoing President
Leslie Schultz, IA. Outgoing Secretary

Members Not Present: NONE

Call to Order

A. Welcome

Terry Coy called the meeting to order at 7:40 a.m. Terry thanked all the members for their support.

B. Financial Report

Linn Schultz reported that he is still paying bills and receiving monies. All of the donated books are sold. Monies

Thursday continued from page 8 ...

• Hospitality Room/Registration: Beth Vander Meer reported that there is plenty of food and drink available in the hospitality room. The hours for both the hospitality room and registration are posted at the registration desk. The hours for the hospitality room are also posted outside the door of the hospitality room.

Adjournment

There being no other new business or announcements, a motion to adjourn the meeting was made by Linn Schultz and seconded by Grady Hite. The meeting was at 12:10 p.m.

Recorded by,
Theresa Newcomer
Recording Secretary

generated by the 2006 convention include:

\$3,842 Do It Yourself Auction
2,000 Auction
920 Raffle
340 Mugs

Not all hotel bills are paid. Entertainment for the banquet has been paid. \$10,000 has been transferred to the new treasurer. The food bill for the hospitality room (\$707.78) has been paid to the Michigan club. Previous Balance of \$21,871.27 plus income of \$10,000.00 = \$31,871.27

C. Secretarial Report

Accurate convention figures were distributed by Leslie Schultz to each member. There is a definite decrease in the number of attendees at the conventions. Leslie sent out surveys to approximately 60 members, but only 2 were returned. The decrease in membership and convention attendance indicates that we need to work on getting and keeping members.

Old Business

A. Convention Schedule Changes

Members discussed changes that have been suggested for changes in the convention schedule. Discussion included combining the welcome meeting and business meeting, changing the auction date, and having a Prussia "show."

Terry Coy suggested a committee to look at these changes. Allen Di Marco will chair the committee. Joy Litteral and Rich Habenicht volunteered to be on the committee with Allen. The committee will be called the "Schedule" committee and will address the overall schedule and possible changes/inclusions. It was suggested that a survey be sent out with the newsletter.

B. There was no other Old Business

New Business

A. Committees

Terry Coy announced the following committees and members:

1. Nomination Committee
Scott Davidson, Texas – Chair
Harold Dodds, New Jersey
Bob Yaklin, Michigan
2. Auction Committee
Brad Witt, Colorado – Chair
Rich Habenicht, Illinois
Allen Marcus, Virginia
3. Audit Committee
Carl Tackett, Michigan - Chair
Tim Nance, Florida
Ed Smith, Ohio
4. Terry Coy motioned that Mary Lou Bougher be named as Historian Chair as a committee of one. Linn Schultz approved the motion and Grady Hite seconded the motion. The motion passed unanimously.

B. Treasurer Concerns

Linn Schultz asked the board to consider the following two items regarding the duties of the Treasurer:

1. The treasurer should hire a professional prepare and file taxes. Discussion followed. Linn Schultz motioned that the treasurer hire a professional. John Titus seconded the motion. The motion passed unanimously.
2. The club currently holds a \$10,000 CD. Linn Schultz asked the Board to give the treasurer guidelines to increase the amount of the CD. He suggested that the CD be \$15,000. Linn Schultz motioned that the treasurer purchase a \$15,000 CD. Grady Hite seconded the motion. Discussion regarding length of time for the CD. Two years is adequate as it follows the length of term for the treasurer. Motion passed unanimously.

C. Membership Roster

Terry Coy noticed that the membership roster has by-laws in the back. It is messy with too many amendments and changes. Terry will talk with an attorney and report back to the board.

D. Web site

Ken Jinde is planning to do a major revision of the home page for the website. He requested funds for doing this. Discussion followed regarding the current website and changes that could be made. Linda Titus moved to set aside a budget of \$2500 for a comprehensive update of the web site, starting with the home page. Linn Schultz seconded the motion. The motion passed unanimously.

E. Club Registration

Linn Schultz stated that the notice for the registration of the club with the State of Indiana will most likely be sent to George as he is a resident of Indiana. George should send the notice to the treasurer and he will process it.

F. Hotel Selection/Contract Negotiations

Historically, the President and Vice President handle these matters. Terry Coy suggested that more board members be involved with this process so that they can answer members' questions about the site and the selection of the site. There was much discussion regarding hotel selection and contracts. It was suggested that an article could be put into the newsletter that explains to the membership how and why a particular hotel is selected. Terry Coy and Linn Schultz will work on this project.

G. Videotaping of Seminars

Ken videotaped the seminars this year. He asked if this should continue to be done. The board discussed this and

To Pick or Not to Pick

Ross Taylor

THE PURPOSE OF THIS article is two-fold. First, to do a little bragging and second, to correct what I believe is a mistake in George Terrell's book, page 97. He states that it is a toothpick holder but I believe it is an egg cup. The bottom of the toothpick holder is flat so all the toothpicks protrude above for easy access. This item has a curved bottom, so the toothpicks stand at different levels.



people and the sale lasted about one hour. The item that caught my eye was this egg cup with Madame Recamier. I am sure no one else at the auction, including the auctioneer, knew or even heard of the R.S. Prussia except me; I was keeping quiet. So the auctioneer held it up and said what am I offered for the china piece. The first bid was ten dollars. I had the winning bid at forty dollars.

I brought it to the convention and a few people who came to my

room saw it. C.L. Riley said it was the prettiest piece of Prussia he had ever seen.

We were not certain whether this was an egg cup until Ron Capers visited us in Canada. He placed an egg in it and it fit perfectly.

Pictured also with this article is a floral egg cup with the same mold. In addition, a genuine toothpick holder is pictured with a hidden image.

As far as we know, this is the only portrait egg cup known. If anyone else has any with different portraits, it would be nice to see them at future conventions.



About twelve years ago, I attended an auction sale near me. It was a very small auction with a bit of furniture and a few antiques. The attendance was about thirty

Post continued from page 9...

decided that videotaping of seminars should continue and that they should be put on a DVD so that it can be purchased and/or re-used.

H. Compensation for performance of Required Attendance and Work

Compensation was discussed at length. Linda Titus motioned that the web site editor be required to be at the convention for 2 days and that this position be reimbursed with two comp nights for duties performed onsite and offsite. Allen DiMarco seconded the motion. The motion passed unanimously.

Discussion for compensation of the Historian position followed. Linda moved that the historian position shall be reimbursed for their convention fees and for two banquet tickets for the 2006 convention and that these fees (convention registration and two banquet tickets) be waived for future years. The motion was seconded by Allen Di Marco. The motion passed unanimously.

Adjournment

There being no other new business or announcements, Terry Coy adjourned the meeting at 9:30 a.m.

Recorded by,
Karla Hartzheim
Secretary



Ice Cream Social

Thursday, July 27, 2006



Regional Club News

The fall meeting of the RSP Michigan Water Wonderland Club was held at Sorrento's Restaurant on October 15, 2006. Bea Gatewood hosted the meeting. Members spent some time in conversation and fellowship before and after a delicious dinner. Twenty-one members were present. A brief business meeting was held. Frieda Mott and Grace Presler resigned their positions as Treasurer and

Secretary respectively. Bea Gatewood volunteered to take the Treasurer position and Sue Houserman volunteered to take on the Secretary position. It was suggested that those members who are also antique dealers have RSP membership applications in their shop or booth for shoppers who were interested in Prussia to pick up and possibly join the club. Anyone interested in obtaining applica-

tions was told to contact Linda Titus. Items for show and tell were passed around while members who brought them told something about each item. The spring meeting is tentatively scheduled for May 20, 2007, and will be hosted by Jerry and Darlene House. After the meeting everyone was invited to Bea Gatewood's beautifully decorated home to view her collection.

Sue Houserman



Shhhhh....

David and I were comparing the decorations on three Mold 55 bowls that are in their collection.

Two are marked with just the Wreath & Star, the other also has the Gesetzlich, geschutzt stamp. All three have five orchids (our determination) as part of the mold, all have the same band around the top rim, all have five panels that terminate in the same way and are outlined in gold. The two green ones have gold tracery, the lavender one has red with gold. There is a common decorating pattern in all the bowls that we could locate in books. There are three in Leland and Carol Marple's book, "The Wreath and Star," on page 23, plates #63 Butler bros. ad, 64 floral decoration, 65 floral decoration. In Mary Frank Gaston, book 3 page 51, plate 83 floral decoration, book 2, page 46 plate 71 there is an Autumn Season decoration and book 1, page 64, plate 116 fruit decoration. Our bowls are 10.5" dia with circumferential embossments

terminating in radial spears beneath the five floral rim features. These embossments are used in Mold 55 decorating schemes to provide guides for contrasting gold high lites or pastel shades of green, lavender or red. The bowl found in Gaston Plate 116 does not have these embossment features and therefore lacks the design detail that we find so appealing and consistent with other 10.5" Mold 55 bowl examples.

Although Fruit decor bowls of this type are attractive, we find characteristic differences that separate 10.5" dia Mold 55 from smaller, less detailed 10." Mold 55 found in Gaston Book 1. From our comparisons we find that appealing, detailed mold designs, like the 10.5" dia Mold 55 bowls, seem to be decorated with attractive, pastel shaded satin finish with gold accents, all complementing and coordinated with the mold features. We believe that these attributes come together by intent and not a random coincidence of events.

I hope that my Fruit Decor comment does not cause any hard feelings among those who hold Fruit Decor or Surreal Dogwood in high esteem. Our intent is to present evidence that there was a relationship between mold detail, decoration scheme design and color choice that makes some RSP more appealing, to us anyway. The same case could probably be made for other floral based mold designs such as Iris or Carnation. Our examples have consistent RSP RM, manufactured from the same time frame. Design Appeal, goes beyond post 1904 vs. pre 1900 sophistication and manufacturing learning curve growth, therefore the comparison with RSP RM Surreal Dogwood pieces.

We challenge anyone to find one with surreal dogwood/common decoration as we believe only the better decorators could choose this mold to decorate.



Welcome New Members

Joni Klimaschesky
Fairbanks, AK

Karin and Jim Rott
Gig Harbor, WA

**Linda Wagner
and Ted Mitten**
Cary, IL

Suzanne Mallard
DeWitt, AR

Roselyn Rogers
Gridley, CA

Lorinza Brumfield, Jr.
Pembroke, VA

Darlene Schaake
Ellensburg, WA

To everyone who offered a helping hand during the Michigan Convention's Hospitality Room, "It wouldn't have been a success without your hard work and teamwork!"

The members of the Michigan Club would like to thank all the R.S. Prussia members who attended our home state convention and hope that everyone had a wonderful time and made the journey back home safe and sound!

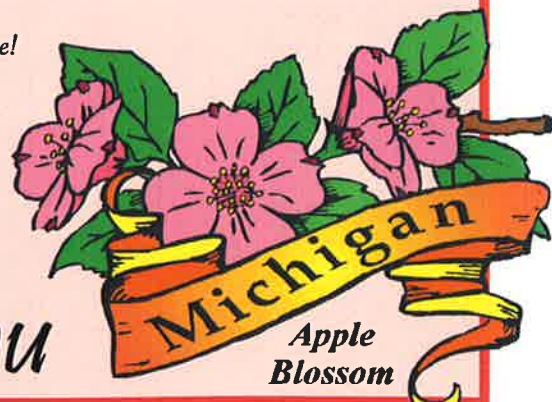
A personal Thank You to George Kandel:

I would like to personally thank George for all of his guidance and support during the entire convention preparation process. His encouragement was a tremendous moral boost and strengthened the Michigan Club's structure to allow for the smooth convention at Michigan.

I PERSONALLY THANK YOU – George!

*Sincerely,
Beth Vander Meer
Michigan Water Wonderland Club's
Hospitality Chairperson*

Thank You



COLLECTING HAS ALWAYS been in my blood. From my earliest days, I can remember going on vacations or attending events and having to bring something home as a reminder of the trip or event. Early collections included coffee mugs, banks, and other affordable items for a young child.

As a teen, I started attending flea markets, tag sales, and auctions with my mother, Dixie, where I was introduced to the wonderful world of antiques. No longer would simple coffee mugs or banks satisfy the urge to have things, now my eye turned towards items with a history. While most of my friends were spending their money on clothes or cars, I was scooping up Depression glass and Occupied Japan figurines from the 1930's and 40's.

In my 20's, I met Amy and her family. Amy's family are collectors from way back, her Great Uncle Bill and his wife were avid antique collectors during the 1950's through the early 70's and had hopes of opening a shop one day. Amy's mother, Brenda, was another collector with a passion for the small white figurines created by Sam Butcher and know internationally as Precious Moments.

During one of my first visits to Amy's family home, I was shown a china closet belonging to Amy's Great Uncle that would spark my desire to possess some of the beautiful things that graced many Victorian homes. A beautiful cabinet in its own right, standing on paw feet and made of gleaming tiger-striped oak with turned columns running the length of the central door and curved glass finishing the sides. Inside were treasures of a by-gone era glistening and gleaming in the light. Art glass, cut glass, delicate porcelains, and ivory to name a few. It was this day that

I saw my first pieces of RS Prussia.

Upon asking about the delicate porcelain, her Uncle opened the cabinet and let me hold some of his beloved antiques. Gazing upon their beautiful floral decorations and feeling the silky smoothness of their finish, I was immediately under the spell of this beautiful porcelain. I knew that day, that I would one day have to possess some of these treasures.



He also shared his knowledge of other antiques with names like Stueben, Bristol, Libbey, and Webb.

A few years passed during which Amy and I collected antiques. We collected art glass, cut glass, and other beautiful things, but had not yet given in to buying that first piece of RS Prussia. Although we gazed at it lovingly, we could just could not break down and spend that much money on just one piece. Over the years we attended antique shows with her Uncle, and he would always point out the RS Prussia and inquire as to which patterns were our favorites. Early on, Amy fell in love with the Reflecting Waterlilies floral. At one of the shows we attended regularly, in Belleville, Illinois, Amy's Uncle purchased an Icicle mold open handled cake plate in the Reflecting Waterlilies pattern and presented it to Amy and I as a gift. This was to be the start of our RS Prussia collection, a collection that has grown steadily over the years.

In 1999, Amy's Uncle decided to have an auction and part with many of the wonderful items he and his wife had collected. At this auction were many family members and friends. Among them Amy's parents (Mike and Brenda) and her cousin Sue and husband, Bill, as well as Amy and I. Luckily we were all able to get some of these wonderful items. (Not only did we get a piece or RS Prussia, we were also able to get that won-

derful china closet that now commands center stage in our living room.)

Since then, the six of us have made many trips together to attend antique shows and auctions. We have also all become members of the International Association of RS Prussia Collectors, Inc. and have the opportunity to attend a convention or two. Most recently, Amy, her parents, and I returned from the convention in Novi, Michigan. Once again, we were lucky enough to come home with several pieces of RS Prussia to add to our collections. As you can see, collecting for us really is a "family affair."

NOTICE

NEWSLETTER FEATURES

- Our feature articles for the February newsletter will be on "Sets."
- Have you compiled a lovely R.S. Prussia set of dishes that you could set your table with and use pretty table linens and stemware to show it off? Please send photos and accompanying article to:

Linda Titus, Editor

Images In Ink

P.O. Box 983

Durant, IA 52747

or e-mail photos and articles to:
imagesinink@iowatelecom.net

PHOTO GALLERY

- Don't want to write but have photos of your collection to share?
- Send photos and brief descriptions to:

Linda Titus, Editor

Images In Ink

P.O. Box 983

Durant, IA 52747

or e-mail photos and articles to:
imagesinink@iowatelecom.net

Hospitality



Thank You
for your contributions
to our treasury!

\$

Raffle \$920.00

Do-It-Yourself Auction \$3842.00

Scott Brown Auction donated \$2000.00

\$

Do-It-Yourself Auction

Chairman: Howard Greenberg; Co-Chair: Tim Nance
Committee Members: Terry and Francis Coy, Mary Lou Bougher, Howard Dobbs, Jr., Selma Greenberg, Fred Kunz, C.L. Riley, Ben Thompson, Allison Thomas, Matt Wroda and Angela Atkins



THE 13TH ANNUAL DO-IT-YOURSELF

AUCTION was dedicated to the memory of Joyce Williams. In memory of Joyce Williams, Georgia Stewart donated a beautiful Melon Eaters plate with a very unusual mold that sold for \$1300.00. The plate was purchased by Ed and Inez Smith. This topped the previous record of \$650.00 for a Cobalt plate donated by Jim and Laurie Wroda, bought by Mike and Sandy Medvin. This auction raised \$3,842. for the club and bringing the grand total to over \$36,000. during the 13th Do-It-Yourself Auctions. It is the wonderful generosity of our members that makes the RSP Club the best. We want to thank all of those who donated and purchased and participated in the auction. Special kudos to Georgia for her most valuable donation. Let's hope we can continue the traditions for many years to come.

- Howard Greenberg



Future Conventions

2007 PEORIA

Thursday, July 26 - Sunday, July 29
Ramada Inn and Conference Center
4400 N. Brandywine Dr.
Peoria, IL
\$79 rate/per night, per room

2008 LOUISVILLE

Marriott Inn on I-64
Louisville, KY
\$102 rate/per night, per room

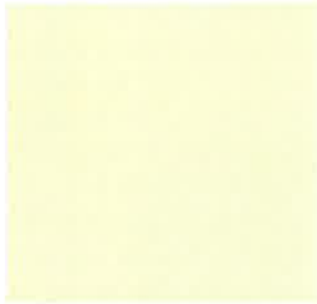
2009 OHIO

REMINDER

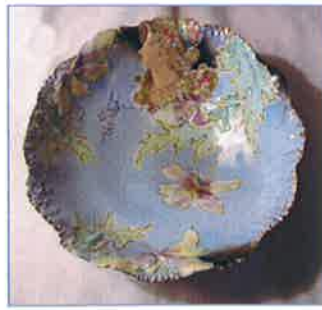
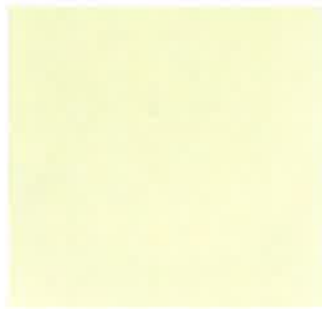
Your 2007 Dues will
become due on
December 31, 2006.
Please make a note on your
December calendar
to send a check for \$30
to our new Secretary/
Treasurer team:
Richard and Karla Hartzheim
PO Box 583
Mukwonago, WI 53149

*A statement will be send out to all members in
November as a friendly reminder.*

Room to Room Viewing



Room to Room Viewing



Room to Room Viewing



THE PHOTO GALLERY

The Heard Collection

Photo Gallery Special



Marvin and Laura Heard
and their very impressive collection.

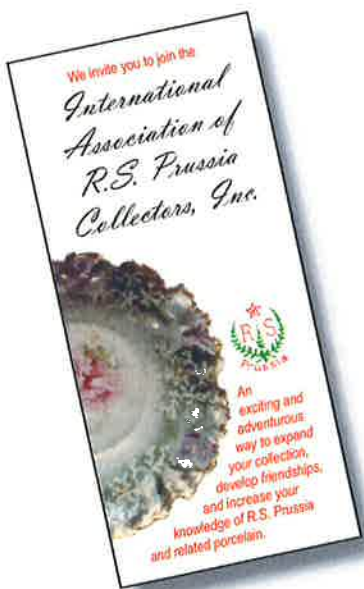


Attention Dealers, Auctioneers, Antique Shop and Antique Mall Owners

The new membership application brochures are now available. Please contact our Secretary, Karla Hartzheim, WI, to have her send you a bundle to set out at shows, shops and auctions to help recruit new members.

Phone: 262-642-5460

E-mail: rhartzheim@wi.rr.com



RS Prussia Convention Seminar

ALL OF US ENJOY THE intricate mold design, detailed decorative features, and spectacular color range of RS Prussia and related German porcelain ware.

In order for any of this to occur, specific raw materials had to be combined into a fairly precise formula, formed, and then processed into a basic porcelain piece that then could be enhanced into the products for decoration.

Over the years, various comments have been overheard concerning the basic manufacturing process such as: the material is essentially glass that has been poured into a mold, curved handle pieces were pulled by hand while still molten into shape and so forth. From overhearing some of these comments, a need to more fundamentally understand the production of porcelain exists and can add even further appreciation toward the complexity and beauty of German porcelain.

This presentation explains some of the basic fundamentals of porcelain manufacture and adds some processing facts that truly are amazing given the limited knowledge available at the time. Important information has been obtained from the paper, *The History of the Suhl Porcelain Factories 1861-1937*, Bernd Hartwich, June 26, 1984.

Important Facts-Suhl Porcelain
The basic Suhl porcelain product is extremely high quality due to exceptional whiteness, translucency, and strength.

Little knowledge was available about the raw materials consistency and quality parameters. Any changes in these features may not have shown up until the formula was processed at which time defects and potentially huge losses could have periodically occurred until corrective steps were taken to remedy them.

Production methods were developed and refined during this time period and some still exist today in modern factories producing porcelain.

Other production methods and techniques, such as specific kiln firing schedules and controls and colored glaze formulas may never be fully known or understood.

All these factors lead to further amazement and intrigue that comprises appreciation of RSP porcelain.

Porcelain Formula

In a formula published and discussed in a book entitled *Industrial Ceramics*- Singer and Singer, 1963 Chapman and Hall Publishing Company, London England, this formula is listed with the descriptive notes. It specifically mentions Zettlitz kaolin and that kaolin originates from the Czech Republic.

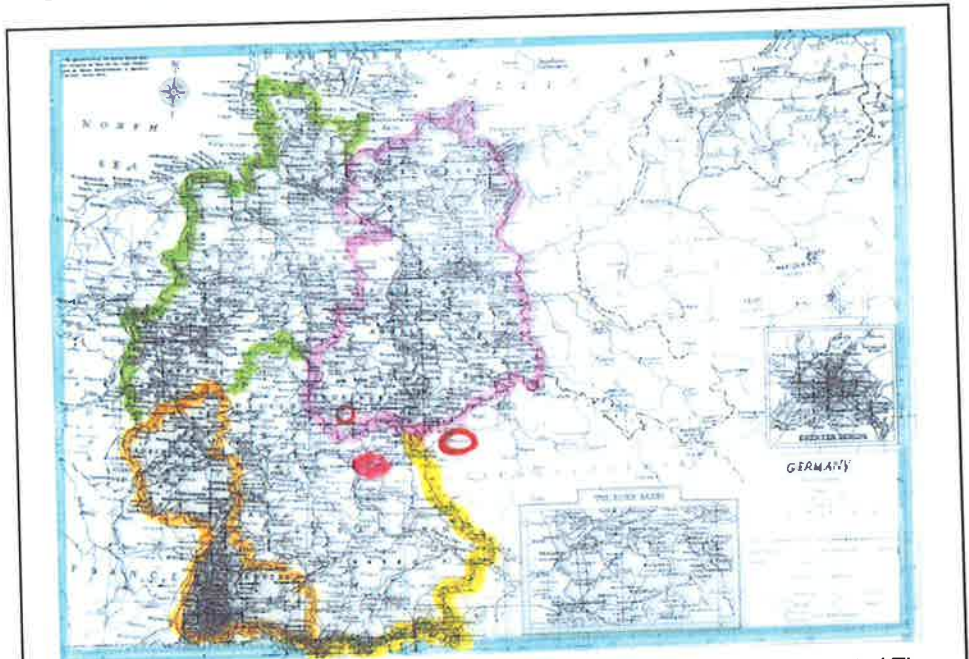
The thesis referred to earlier as

a reference in this presentation confirms that Zettlitz kaolin was indeed a specific grade used by the porcelain manufacturers in the region. Note the kaolin comprises nearly half the formula. Its function is to serve as a binder to the other ingredients and provide some strength and handling properties to the piece when removed from the forming molds for additional handling and processing.

The silica serves as a glass forming material at the high firing temperatures of the kilns and helps to counteract shrinkage of the formula once it becomes molten from heat.

The feldspar is similar in function to silica but it served as a flux to the formula also and therefore permitting the formula to fuse at a much lower temperature than just a kaolin and silica mixture.

Typical Data Sheet- Zettlitz Kaolin
continued on page 21



This is a map representing the area where porcelain manufacture was concentrated. The town of Suhl is circled on the left and the producers were located all through the region.

An important factor in the location is the region in the Czech Republic where an important mine of high quality kaolin clay is located.

Periodically some kaolin could also have come from southwest England and quality feldspar and silica would have likely come from Norway. These minerals comprised the majority of the formula ingredients to produce porcelain.

Suhl Porcelain Factories continued ...

This kaolin is still available today and a data sheet was provided upon request. There are only three really important features of the product to point toward:

Aluminum oxide is a major chemical constituent of the product and that is a very important element to help the formula retain its form during the firing process. Remember that nearly half the formula is comprised of kaolin and it is there to add forming properties to the formula in early production and then to add aluminum oxide for its influence in the firing process.

Many types of kaolin exist around the world but few have the low iron oxide and titanium oxide content of Zettlitz kaolin. These are actually contaminants of the clay and low iron oxide permits the color of the porcelain to be as white as possible. The low titanium oxide permits the RSP type porcelain to have the translucent feature.

The USA is major world-class producer of kaolin clay, but not a single grade is commercially available from there to produce porcelain of the Suhl region quality. It falls short mainly due to high titanium dioxide contents naturally inherent in the kaolin products.

Feldspar and Silica Chemical Analysis

These two minerals have the same physical appearance but differ substantially in their chemical analysis. Feldspar is comprised of a significant amount of silicon dioxide with some aluminum oxide content present. The fluxing action or melting qualities of the mineral is due to the amount of potassium oxide and sodium oxide the mineral adds to the formula.

The silica is nearly pure silicon dioxide and is a major source of glass content in the fired porcelain.

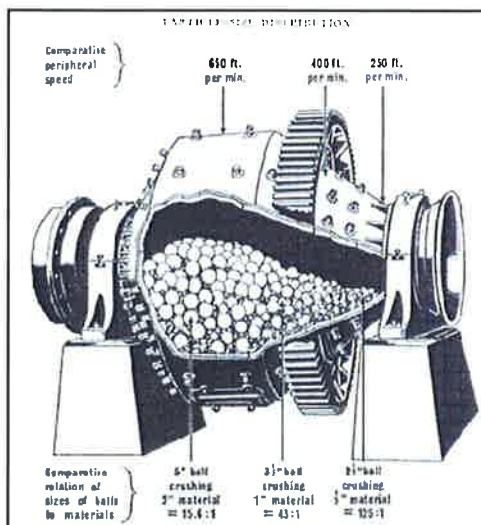
Neither of the elements adds any significant amount of iron oxide to the formula, which would detract from the whiteness of the fired porcelain.

Ceramic Slip Casting Process

The method of forming RSP shapes was done by mixing the formula with water and a chemical dispersant, sodium silicate and perhaps sodium carbonate, and then pouring the liquid into a plaster mold. The mold absorbed the water and left the solids deposited in the shape of the piece. After drying, the piece could be released from the mold. At that point, the piece would be extremely fragile and many could have been lost just in this initial process. The larger and more detailed mold patterns would have had potentially large loss numbers. However, the scrap from these losses could have been reprocessed so at least the raw materials were salvaged.

Ball Mill Schematic

The referenced thesis makes specific mention of a ball mill used to process the raw materials especially the hard rock products of feldspar and silica. While this is not the exact design of equipment necessarily used, it is the same principal intended.



in a chamber filled separately with the feldspar and flint. The rocks

ground the material to size so that the largest percentage, maybe 95% passed through a 200-mesh screen (window screening is ~40 mesh).



Firing of Porcelain

Suhl porcelain was referred to as hard paste porcelain meaning it was a two-fire process just to get the pieces prepared for the subsequent decorative fires with colored glazes and stenciled or decaled patterns.

subsequent decorative fires with colored glazes and stenciled or decaled patterns.

The first fire simply fired the ware so that it was durable but not fully glass-like in form or vitreous. This temperature would have been around 1500F or higher.

After retrieving the ware for the first fire, it was clear glazed and then fired again and this time to a maximum temperature of nearly 2600F. This fire matured the body to a true vitreous porcelain state.

It is likely that at sometime during either the first or second fire or both, a change in kiln atmosphere was employed to limit the oxygen content from air and produce a reduction fire. This assisted in further whitening the body by taking the small amount of iron oxide in the formula and changing its oxidation form thus making it less dark in color throughout the body. This is also why we sometimes see a large black speck in the body or glaze as a larger piece of iron bearing mineral could not oxidize but instead melted or blossomed in the molten porcelain. It is actually a FeO type of iron rather than Fe₂O₃.

Sagger- First Fire

From 1869- 1894, porcelain kilns were fired by coal, which had lots of contamination. The ware had to be stacked in "capsules" as stated in the thesis. The proper term is sagger, which is a ceramic box like

continued on page 13

Suhl Porcelain Factories continued ...

structure where the pieces were bulk stacked and fired. The pieces had no glaze on them and they were fired below the maturing temperature so no sticking would have occurred.

All space was utilized as evidenced by plates or bowls put in one section and smaller pieces put in the remaining available space.

Setter- Second Fire (Glost)

Once the 1st fire or bisque fired pieces were glazed, they were placed in a second type of protective ceramic container and fired again. This diagram shows a likely set of plates placed and stacked individually for the final fire prior to the decorative processes.

Hard Paste Porcelain Curve- Porosity vs. Temperature Increase

Both the blue and yellow color curves are representative of hard paste porcelain showing how the porosity changes as temperature and time increase. The yellow curve may be more similar to RSP type porcelain and the gradual change in porosity would have produced gradual changes in shrinkage to help reduce any excessive cracking losses during this processing stage.

However, the demand on kiln materials to withstand this temperature range would have been severe and the consumption of fuel to reach these temperatures would have been demanding.

Firing Cones

Not enough is known about the nature and firing techniques of the kilns during the production of Suhl porcelains, but one thing is for certain; accurate temperature measurement equipment did not exist.

In 1886, a German chemist, Dr. Herman Seger developed a series of compositions that melted at specific temperatures and time durations. These compositions were pressed into a cone shape, dried and then fired along with the ware. When the cones bent under heat influence to become glass like in appearance, it signaled that the proper maturing temperature of the kiln had oc-

curred.

This method of qualitatively measuring temperature was so effective that it is still used today.

How temperature was monitored prior to 1886 is unclear. It was probably just hands-on experience taught from operator to operator.

Porcelain Heat Expansion Characteristics

Highly decorative porcelain techniques reportedly required as many as 20 separate firings at considerably lower temperatures than certainly the glost fire. This curve showing the percent expansion of an actual porcelain piece as temperature increases to 700C illustrates why it was possible to make the many firings and have low cracking losses in the pieces.

Note the gradual and straight expansion as the piece is heated indicating smooth change in dimension. This feature permitted little strains to be set up in the piece making it subject to cracking.

The formula ingredients as well as the firing nature made this multiple firing decorative feat possible. No other formula could withstand this repeated heating for the high number of cycles needed to make all the decorative colors typical of RSP porcelain.

Glaze Formula

The second fire of the porcelain matured both the body and the glaze, which was simply a clear glaze in which other colored glazes were later, added for decoration.

This formula would have been typical of a hard paste porcelain glaze and uses many of the same ingredients the body has but in different proportions.

It was mixed in wet form, ground in a ball mill, and then the first fire or bisque porcelain was dipped quickly to coat the piece.

The glaze had to uniformly coat the piece and provide a smooth glossy surface. Each material added an important technical function to the performance of the glaze.

Suhl porcelain did not craze like earthenware type bodies, which is why pieces appear the same today in quality as they did the day they were finished 100 or more years ago depending on the usage. Delicately decorated and fragile, Suhl porcelains have incredible durability and strength. A glazed piece typically has a measured fired strength in the range of 10-12000psi versus one half to one third of that for other ceramic formulas.

Final Comments

The intent of this presentation is to bring into focus some of the phenomenal manufacturing challenges that were met and overcome by the German porcelain factories.

Raw materials were located and formulated to produce magnificently white and translucent porcelain.

Equipment was engineered and designed to overcome processing hurdles.

Kilns were designed and operated at incredibly high temperatures.

Glaze colors and artistic effects were developed that may never be fully understood or ever duplicated again.

All these factors add further appreciation and intrigue to the world of RSP collectors.

Kenneth Bougher
International Association
of RS Prussia Collectors Inc.
July 19, 2006



2006 Convention Auction • Hosted by Brown Auction

The 2006 Convention Auction was brought to the Club by Brown Auction Service. Brown Auction and crew sold 277 lots to the large crowd of eager R.S. Prussia enthusiasts. Below is a list of the items and their selling prices.

LOT#	Item Description	Winning Bid
1	R.S.Prussia Mold 92 8 1/2"d plate, Snowbird Scene, gold stencilling & trim, rm.	575
2	RSP "Lily" Mold 29 10 1/2"d bowl, LeBrun I portrait on white, shaded rose finish on border w/ shadow flowers, gold stencilling & trim - Pretty	400
3	RSP "Camation" Mold 28 tray, 11 1/2"l x 7"w, pink & white roses on pale yellow w/ shaded green on camations & border, rm	135
4	RSP Mold 631 10 1/2"h chocolate pot, Snowbird Scene w/ Swans on Lake on reverse side, black finish at top & base w/ gold designs & trim, rm ... Gaston 3, Plates 405/406.	6500
5	RSP "Iris" Mold 25 9 1/2"d cake plate, Autumn Season portrait, Tiffany irid. finish w/ gold stencilled designs & other heavy gold trim, rm - Super Color!	2100
6	RSP Mold 343 12" cake plate, yellow daffodils outlined in gold on cobalt blue background, gold stencilling & trim ... McCaslin RSP & More, pg. 65, 1/2.	375
7	RSP Mold 343 9 1/4"d 3-ftd bowl, pink & peach roses decorate center & sides w/ cobalt border & heavy gold stencilling & trim, red crown Viersa mark.	200
8	RSP Mold 932 9"h vase, Dice Throwers w/ Single Melon Eater on reverse on shaded green background, jewels decorated as opals, gold embellishments, rm	1300
9	RSP Mold 78 10 1/2"d bowl, Spring Season portrait, deep rose finish surrounds dome shapes that are decorated w/ pink blossoms, gold scroll work, rm ... Gaston 3, plate 87	950
10	RSP Mold 517 tea set: 6 1/4" tea pot w/ LeBrun I portrait; 3 1/4" h creamer w/ Countess Potocka portrait; 5" h sugar w/ lid w/ LeBrun I portrait, rose finish & heavy gold work - Exceptionally pretty!	2900
11	RSP Mold 540a cracker jar, 5 1/2" h, Swans & Gazebo, gold stencilling, rm (very minute finial roughness) ...	175
12	RSP Mold 343 celery, 12"l x 6"w, Seated Lady w/Fan & scenic decor, Surreal Dogwood Blossoms on cobalt border, gold stencilling	350
13	RS Steeple Mark 9 1/4" Cobalt cake plate, lt. blue flowers w/ large leaves all outlined in gold.	300
14	RSP "Iris" Mold 25 10 1/4" bowl, green/yellow/orange w/ pink poppy décor	150
15	RSP "Ribbon & Jewel" Mold 522 12" h tankard, Dice Throwers & Single Melon Eater, jewels decorated as opals, heavy gold work, rm - Nice!	1800
16	RSP Mold 347 8 1/2"d plate, White Swan outlined in gold w/ white water lilies, other gold trim & enamelling ... Gaston 4, Plate 544	115
17	RSP Mold 304 11"d bowl w/ three scenes: Ducks/Swans in Lake/Swallows, gold trim, rm.	750
18	RSP "Fleur-de-Lys" Mold 9 tray, 11 1/2"l x 7 1/2"w, Spring Season portrait w/ blue Forget-Me-Nots on green shaded background w/ pink tinting at border, gold trim, rm	900
19	RSP "Fleur-de-Lys" Mold 9 tray, 11 1/2"l x 7 3/4"w, Autumn Season portrait on Winter season background w/ pink tinting at border, gold trim, rm (very small back side hairline)	600
20	RSP 10 1/2"d bowl, center features Diana The Huntress surrounded by (6) dome sections w/ Madame Recamier & Countess Potocka outlined in floral mold, blue shading on border w/ heavy gold stencilling & trim make this a gorgeous piece, rm	1000
21	RSP Cracker jar, satin finish	135
22	RSP "Iris" Mold syrup	60
23	RSP Mold 576 3 1/4" h creamer & 2 1/4" h open sugar, Bird of Paradise on green to brown background, rm	1600
24	RSP Mold 329 10 3/4" d bowl, Masted Schooner Ship decor, gold trimmed border, rm.	500
25	Marked Royal Vienna 8" h cobalt vase w/ LeBrun II portrait & dbl. handles, cobalt overlaid w/ gold stecilled flowers, Greek Key design & other heavy gold work, RV Mark 2	600
26	RSP Mold 729 hatpin holder, 4 1/2" h, scalloped crimped top & bottom, Colonial couple on blue/green background, rm	70
27	RSP "Iris" Mold 25 celery dish, 12"l x 5 3/4"w, Autumn Season portrait, peach & lavender highlights, satin finish, rm	600
28	RSP "Fleur-De-Lys" Mold Chocolate set: chocolate pot, creamer & sugar, (4) cups, (4) saucers, Wheelock Prussia Mark - Great Rare set!	1100
29	RSP 11 1/2" h Chocolate pot, floral on legs, lots of heavy gold, unusual shape, rm	200
30	RSP "Camation" Mold 526 13" h tankard, Autumn Season portrait, tinted lavender background w/ gold highlights	2600
31	RSP "Icicle" Mold 7 9 1/4" d bowl, Snowbird Scene, rm.	925
32	RSP 10 1/2" d bowl w/ floral border mold, Countess Potocka, dark green sides w/ brown border highlighted w/ gold ... Mold same as Gaston 4, Plate 173.	1000
33	RSP "Icicle" Mold 7 relish dish, 9 1/2"l x 4 1/2"w, Peacock decor, gold trim, rm	300
34	RSP "Fleur-De-Lys" Mold 24 Berry set: 10" master bowl, 5 1/4" saucers, Wheat pattern, rm ... similar pattern in Gaston 1, pg. 52, plate 82.	150
35	RSP Mold 631 cracker jar, 5 1/2" h x 8 1/2" w, Old Man in the Mountain on front & back w/ Swans on sides, black finish w/ gold designs & trim - Super Piece!	7000
36	Unmarked RSP 11 1/2" floral plate, Cobalt w/ yellow roses	275
37	Unmarked RSP "Icicle" Mold creamer & sugar, Basket of Flowers, satin finish	175
38	RSP Mold 632 tea set: 4" h tea pot (repaired rim & lid), 3" h creamer, 3 1/2" h sugar w/ lid, Autumn Season portrait w/ blue irid. Tiffany top & bottom borders, lots of gold stencilling & trim, rm	1600
39	RSP "Iris" Mold 25 10 1/2" d bowl, Winter Season portrait w/ gold trim on white satin finish, rm	900
40	RSP Mold 644 9 1/2" h demi-tasse pot, Spring Season portrait, irid. Tiffany finish w/ heavy gold work around design, RSP Mark 7 ... Gaston 3, plate 441	1300
41	RSP "Camation" Mold 526 4" h creamer (handle crack) & 4 1/2" h sugar w/ lid, Winter Season portrait, lavender tint on camations, satin finish, rm	500
42	RSP 1" x 2" hinged pin box w/LeBrun II portrait on irid. pink - Rare!	175
43	Steeple Mold 4 (5) pc. cake set: (1) 10" d & (4) 7 1/2" d plates w/ blackberry décor, cobalt borders w/ molded floral shapes, gold trim, 1 plate w/ RS Steeple Mark 1 ... McCaslin, pg. 77, 3/1 & 3 + 4/1	250



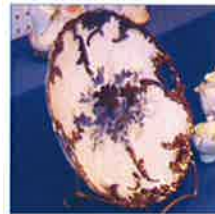
2006 Convention Auction



LOT#	ItemDescription	Winning Bid
44	RSP Mold 91 11"d bowl, bronze & purple flowers, cobalt finish on dome shapes, gold highlights ... pictured in McCaslin, pg. 75, 2/2	125
45	RSP 10 1/2"d bowl, Lady w/ Fan on green circled w/ gold stencilling, green irid. Tiffany finish w/ pastel shading on flowers ... Gaston 1, Plate 478 for mold	950
46	RSP Mold 510 tea set: 5 1/2"h teapot, 3 1/2"h creamer, 4 1/2"h sugar w/ lid, Swans on Lake outlined in gold, satin finish	300
47	RSP 6 3/4"h vase featuring pair of Tigers on reddish brown/green tones, silver top rim	300
48	RSP Mold 584 chocolate set: 10 1/4" pot & (6) 3"h cups w/ saucers, Swans on Lake w/ Evergreens w/ gold trim, rm	1500
49	RSP "Stippled" Floral Mold 23 10"d cake plate, LeBrun I portrait on shaded green background w/ gold stencilling & gold border	850
50	RSP Mold 631 (w/ smooth base) lemonade pitcher, 6 1/4" x 9"w, Old Man in the Mountain decorated front w/ Swans on reverse, black finish on base & trim w/ gold designs, rm ... Gaston3, Plate 402 - RARE!	10,250
51	Unmarked RSP 11 1/2" open-handed plate	25
52	Unmarked RSP "Cut-Out" Mold creamer & sugar	275
53	RSP "Lily" Mold 29 bun tray, 13 1/2" x 8 1/2"w, Countess Potocka portrait on gold finish, dark blue border w/ shadow flowers w/ gold stencilling & trim - Very pretty!	1700
54	9"d bowl, RS Steeple Mold 8, Lady Feeding Chickens, green border overlaid w/ white flowers, gold stencilling inside border	150
55	RSP Mold 456 14"h tankard, Autumn Season portrait w/ purple flowers on peach tinted background, gold trim, satin finish, rm	1400
56	Unmarked 12 1/2 x 7 1/2" w tray, border has domed sections seperated by molded floral/honeycomb-like decor, Sheepherder I on green tones	325
57	RSP Mold 620 4 3/4" creamer & 5 1/2" sugar w/ lid, Ducks & Ducklings on white, Wheelock Prussia mark 650	
58	Royal Vienna 11 1/2" Vase w/ side decorative handles, purple/yellow w/ clematis decor, gold RV mark	250
59	RSP Fleur-De-Lys 8 1/4" plate, green w/ pink poppy decor, gold border	120
60	RSP Mold 343 9"d plate, Autumn figural portrait in Keyhole medallion, irid. Tiffany purple-colored inner border, gold finish around portrait/outer border & decorated w/ small pink roses, rm - Always pretty!	1100
61	RSP Mold 343 9"d plate, Winter figural portrait in Keyhole medallion, irid. Tiffany purple colored inner border, gold finish around portrait/outer border & decorated w/ small pink roses, rm	1200
62	RSP Mold 343 9"d plate, Spring figural portrait in Keyhole medallion, irid. Tiffany purple-colored inner border, gold finish around portrait/outer border & decorated w/ small pink roses, rm	850
63	RSP Mold 343 9"d plate, Spring figural portrait in Keyhole medallion, irid. Tiffany dark green - colored inner border, gold finish around portrait/outer border & decorated w/ small pink roses, rm	925
64	RSP Lily Mold 29 9 1/4" bowl, Poppies & Daisies decorate center on irid. white w/ portraits of Countess Potocka, Madame Recamier & 2 Gibson Girls on border in shaded blue, rm	100
65	RSP 14"h tankard, Steeple Mold 7, LeBrun II portrait w/ purple Tiffany finish	1350
66	Unmarked RSP 11 1/4" plate, (6) medallions w/ Countess Potocka & LeBrun, lots of cobalt & gold	1900
67	Unmarked RSP mustard, Snowbird Scene	175
68	RSP "Ribbon & Jewel" Mold 645 4"h creamer (repaired) & 4 3/4" sugar w/ lid, Single Melon Eater, jewels decorated as opals, pink top rim trim, heavy gold work, rm	500
69	Prov. Saxe 10"d bowl, figural portrait of Woman Holding One Rose on irid. white w/ gold trim, ES Mark 13	80
70	RSP Mold 645 9 1/2" demi-tasse pot, Spring Season portrait on lt. green background w/ heavy gold work, jewels decorated as opals, rm	2250
71	RSP Mold 341 11"d cake plate, Swans on Lake w/ Gazebo on blue, gold stencilling & trim, rm	275
72	RSP Mold 14 10"d cake plate, Old Man in the Mountain center scene; cameo scenes of Sheepherder I/ Snowbird Scene/ Old Man in the Mountain on border medallions, black inner border overlaid w/ gold designs & wide gold outer border, rm - Gorgeous decor!	2600
73	RSP Art Nouveau 13" vase w/ jewels & irid. Tiffany background, red & pink roses, satin finish, rm - Outstanding Piece!	650
74	RSP 9 5/8" Coffee pot, Poppy, heavy gold stencilling & deep red & pink decor, rm	450
75	RSP "Fleur-de-lys" Mold 929 9"h vase, Spring Season portrait on white, gold trim, rm	450
76	RSP "Iris" Mold 25 10"d bowl, Summer Season portait, Tiffany bronze finish on outer border & Iris designs, gold stencilling & trim on satin finish ... Gaston 3, plate 43, rm - Nice!	1000
77	RSP Mold 633 chocolate set: 11"h pot & (4) 3"h cups w/ saucers, Sheepherder I decor w/ lt. blue & yellow shading, molded Laurel chain undecorated at top, rm (1 repaired cup)	1800
78	RSP Mold 958 7 3/4" ewer, Bird of Paradise on white satin finish, rm ... Gaston 3, plate 574 - Rare marked example!	750
79	RSP (Mold 96?) 10 3/4" bowl, Reflecting Water Lilies w/ 5 medallions of Swallows on border, green shading, Wheelock Prussia Mark	1250
80	RSP "Lily" Mold 29 10 1/2" d cake plate, Lebrun II portrait, bronze Tiffany & green irid. finish, gold stencilled inside border	700
81	RSP Mold 90 8 1/2" plate, Mill Scene, violet flowers, rm ... Gaston 1, pg. 74, Plate 145	170
82	RSP 11"d bowl featuring unusual decor of wine glass w/ fruit & white flowers	185
83	RSP Mold 277 8 1/2" d plate, 2 Cherubs painting, gold trim, satin finish, rm - Sweet & Rare!	2300
84	RSP "Lily" Mold 29 fld. (10 petal feet) bowl, 10 1/2" d x 3 1/2" h, LeBrun I portrait on white, shaded rose finish on border w/ shadow flowers, gold stencilling & trim - Gorgeous bowl!	550
85	RSP 14 1/2" x 10" w plaque, RS Steeple Mold 18, Victorian Vignettes Series: Seated Lady w/ Dog, RS Steeple Mark 3 ... Gaston 4, Plate 77 - Rare!	2200
86	RSP "Medallion" Mold 14 celery, 12 1/2" x 6"w, Swallows on white to peach background w/ large white Shadow Flowers, rm ... Decor like Gaston 2, Plate 23 (repaired edge).	150
87	RSP Mold 517 cracker jar, 5 1/4", portraits of Madame Recamier & LeBrun I on green tones, gold highlights (top rim repair)	550
88	RSP "Iris" Mold 25 11"d cake plate, lilies, great cobalt to drk. green background w/ gold stencilling & trim	1600

2006 Convention Auction

LOT#	ItemDescription	Winning Bid
89	RSP Mold 82 9 3/4"d cake plate, lilies center w/ cobalt border, gold stencilling & trim	150
90	RSP 9 1/4" vase, Countess Potocka, rose-colored neck & stemmed base w/ heavy gold trim, rm	300
91	RSP 8 3/4"d plate (similar to Mold 209), pink flowers in center, 4 medallions on border - 2 feature cherubs, 2 feature portraits, gold stencilling	250
92	RSP "Medallion" Mold 14 celery dish, 12"l x 6"w, Old Man in the Mountain center decor w/ medallion scenes of snowbird/ Shepherd I & Old Man in the Mountain, black inner border overlaid w/ gold designs - Super decor!	1600
93	RSP Mold 256 berry set: 9"d master bowl w/ (4) 5"d sauces, Stag w/ Shadow Flowers on green, rm ... Gaston 2, Plate 134	850
94	RSP 11"d bowl w/ irregular wavy shaped border, Snowbirds scene on green w/ orange glow sky, rm	1000
95	RSP "Iris" Mold 628 7" tall cracker jar, Summer Season portrait on white satin finish, pink tint & gold trim, RSP Mark 7	1500
96	RSP Hat Pin Holder, satin finish	85
97	RSP Sugar Shaker	100
98	RSP Mold 655 4 1/4"d cov. powder or pin box, pair of Tigers on cream/green background, embossed 6-point star mold mark	1700
99	RSP Mold 343 (3) pc. tea set (Steeple Mold 8): 5 1/2" teapot w/ lid - Lady seated w/ fan; 3 1/2" creamer Lady feeding chickens; 4 1/2" cov. sugar (some damage) - Lady watering flowers, cobalt blue borders w/ white flowers, gold stencilling & trim, Royal Coburg Germany & embossed Star Mark 2 ... Gaston 4, Plate 550	650
100	RSP 9"d plate, Admiral Peary Arctic scene, "Midst Snow & Ice" printed in lower right hand corner, smooth border, rm + Germany - Hard to find scene!	3000
101	Marked RS Germany relish dish w/ dbl. pierced handles, 8"l x 3 3/4"w, Bird of Paradise on green	75
102	RSP Mold 502 9 1/2" chocolate pot, Countess Litta portrait & pink roses on shaded bluish green, purple tinting at top rim & finial (minor base chip, rim repaired)	100
103	11" Iris Variation Mold open handled plate, pink/white tulip decor, blue rim, RS Steeple Mark	140
104	RSP 12 1/2" cov. Um w/ large gold handles, pink & white roses w/ gold leaves & cable, irid. Tiffany purple base, opal jewels, satin finish - Beautiful RARE piece!	2300
105	RSP Mold 55 10 1/2" bowl, Autumn Season portrait on green tones w/ gold trim, rm	650
106	RSP "Carnation" Mold 526 tea set: 5 1/4" tea pot, 4"h creamer (repaired) & 4 1/2" sugar w/ lid, pink & white roses w/ green shading & gold trim, rm	600
107	RSP Mold 576 3 1/4"h creamer & 4" sugar w/ lid, Ostriches on yellow to brown background, rm (repaired tip on sugar)	725
108	RSP "Berry" Mold 32 8 1/2" d plate, Spring Season portrait on yellow/green w/ gold trim, rm	550
109	RSP "Berry" Mold 32 8 1/2" d plate, Summer Season portrait on pink w/ gold trim, rm (repaired edge)	325
110	RSP Mold 644 13" h tankard, Winter Season figural decor, gold highlights, rm - Super Tankard.	2800
111	RSP 12 1/4" celery, floral decor, gold w/ dbl. cobalt border, rm	350
112	RSP 8 1/2" vase, Lion & Lioness Scene, unusual shape - RARE	2100
113	RSP Mold 306 8 1/2" d plate, Spring Charmer, satin finish, rm ... McCaslin, pg. 157, 4/3	2800
114	RSP Mold 306 8 1/2" d plate, Summer Charmer, satin finish, rm ... McCaslin, pg. 157, 4/1	1900
115	RSP Mold 306 8 1/2" d plate, Fall Charmer, satin finish, rm ... McCaslin, pg. 157, 4/2 (small rim repair)	1250
116	RSP "Lily" Mold 29 10" d bowl, Madame Recamier portrait, green Tiffany finish w/ gold trim	2000
117	RSP Mold 304 celery dish, 14"l x 6 3/4"w, Turkeys/ Swans in Lake/ Swallows, rm - Nice colors!	750
118	Royal Vienna Art Nouveau 7 1/2" vase, deep pink roses, marked Royal Vienna Germany	250
119	Unmarked RSP (7) piece Childs Chamber set, floral.	175
120	RSP Mold 664 chocolate set: 9 1/2" h pot (top rim damage) & (6) 3" h cups, Mill Scene on green tones w/ orange glow, gold trim (3 cups damaged)	850
121	RSP Mold 85 10 1/2" d bowl, unusual three scenes: Summer Season portrait/ Mill scene/ Shadow buildings in far background, all on pretty pink & green background w/ gold trim, rm - Great décor!	1200
122	RSP Mold 85 10 1/2" d bowl, Summer Season portrait w/ shadow buildings in background, white satin finish w/ gold trim, RSP Mark 7	650
123	RSP 4 1/4" h creamer (repaired) & 4 1/2" sugar w/ lid, pedestal foot, Madame Recamier & Countess Potocka on cream background w/ green shading, gold stencilling & trim, rm	125
124	Unmarked RSP Child's tea set: teapot, creamer, sugar w/ lid (possible marriage), (2) plates, (5) cups, (4) saucers ... Gaston (some sm. rough spots)	250
125	9 1/4" ftd. bowl, cobalt trim, Viersa Crown mark (very small firing separation)	200
126	RSP "Iris" Mold 25 9 1/2" d cake plate, Winter Season portrait on white satin finish, gold trim, rm	450
127	RSP Mold 29 celery dish w/ pierced handles, 12"l x 5 3/4"w, LeBrun I portrait on heavy gold center, shaded blue finish on border w/ shadow flowers	500
128	RSP 11" d plaque, RS Steeple Mold 19, Mill Scene w/ pink/green/orange glow background, gold highlights ... Gaston 4, Plate 78	750
129	RSP "Ribbon & Jewel" Mold 645 11" h chocolate pot, LeBrun II portrait, jewels decorated as opals, heavy gold work	400
130	RSP 10 1/2" h tankard, pink roses, cobalt base & top rim, rm ... pictured in McCaslin pg. 99, 2/1 - Pretty!	450
131	RSP Mold 343 9 3/4" d cake plate multi-colored flowers on cream w/ cobalt border, heavy gold, Germany saxo Altenburg mark ... McCaslin pg. 75, 4/2	90
132	RSP "Iris" Mold 628 5 1/2" h tea pot, Madame Recamier on green tones, gold highlights, rm	150
133	Unmarked 11 1/2" d cake plate, Countess Litta portrait, green scalloped & pleated border, gold stencilling & trim.	175
134	RSP Mold 25b (Iris variation) bowl, 9 1/2"l x 7"w x 4"h, Winter Season portrait w/ green Tiffany finish, heavy gold stencilling, floral interior, RSP Mark 7	1250
135	Marked Royal Vienna 6 1/2" h vase w/ dbl. handles, Countess Potocka portrait, green/lavender finish on top & bottom border & around middle of vase, gold Greek Key design & other stencilling & trim, RV Mark	2250
136	Unmarked RSP 11" jeweled vase, satin finish.	375
137	Unmarked RSP Syrup	75



2006 Convention Auction



LOT#	ItemDescription	Winning Bid
138	RSP "Fleur-de-Lys" Mold 609 4" h creamer & 4 1/2" h sugar w/ lid, Summer Season portrait w/ lavender tint at base & top w/ gold trim, satin finish, rm ... Gaston I, Plate 37	3500
139	RSP "Iris" Mold 25 9 1/2" d plate, Castle Scene on lt. yellow, purple highlights, gold stencilling & trim, rm	650
140	RSP Mold 87 10 1/2" d bowl, Madame Recamier portrait, unusual green irid. Tiffany finish	6000
141	RSP Mold 576 3 1/2" h creamer, Hummingbirds on green/brown tones w/ gold trim, rm	500
142	Unmarked RSP 10 1/4" Hidden Image bowl, pink border, multi-floral decor center (single image in rim)	275
143	RSP Mold 94 10 1/4" bowl, green/white with pink floral decor, gold lined iris	245
144	9 1/4" h vase, RV Mold 4, large molded iris on sides of vase, Countess Litta portrait, lavender finish w/ yellow highlights, Royal Coburg Mark w/ crown shape & Germany in red	900
145	RSP "Ribbon & Jewel" Mold 18 10 1/2" d cake plate, Dice Throwers in keyhole, gold stencilled designs on inner border, jewels decorated as opals, drk. green outer border, heavy gold, rm	850
146	RSP "Swag & Tassel" Mold 155 9 1/4" d bowl, Swans in Lake & Bluebirds, rm ... Gaston 3, Plate 145	175
147	RSP Medallion Mold 631 11" h chocolate pot, Bluebirds on peach to white background, large white shadow flowers on green background decorate base, rm (very minute spout chip)	400
148	RSP 9" plate, Farm Scene, unusual shape, rm - RARE to be marked!	275
149	RSP 12" w celery, Swans & Leaves, satin finish, rm	100
150	RSP 9" d wall plaque, LeBrun I portrait on drk. green w/ rose shaded background, gold stencilling & trim ... shape same as McCaslin, pg 121, lower photo	1300
151	RSP Mold 94 8 3/4" d plate, Cottage Scene surrounded by pink poppies, heavy gold trim, rm	550
152	RSP Mold 182 relish dish, 9 1/2" l x 4 1/2" w, Ostriches on brown tones, rm	1100
153	RSP "Lily" Mold 29 8 1/2" d bowl on 10 petal feet, LeBrun II portrait, green Tiffany finish w/ gold trim	1300
154	RSP 6 1/2" tea pot w/ Hanging Basket decor, heavy gold w/ tapestry effect, rm	225
155	RSP Shaving mug w/ Pheasant on one side & Runner Duck on backside, rm	250
156	7" tall Stein marked Wittelsbach Germany featuring Melon Eaters scene w/ (4) medallions: Countess Potocka; LeBrun I; LeBrun II; Madame Recamier, bluish-green background w/ gold stencilling & trim - RARE Item!	500
157	Marked RS Poland 4 1/2" h Salesman's sample vase, Black Geese on green tones	750
158	RSP 8" h Loving cup-type vase in Ribbon & Jewel Mold, Dice Throwers/Single Melon Eater, heavy gold work, rm	1100
159	RSP Mold 642 10 1/2" h chocolate pot, Masted Schooner scene on white background w/ green/pink/blue tint, gold trim, rm	2100
160	ES Germany (Prov. Saxe) 11 1/2" plate, Mythological portrait of 3 women & cherubs. (4) portrait medallions around rim, bands of gold & green, rose buds w/ cream & green backgrounds	70
161	Germany 8" h 2-handled vase, portrait of young lady, glossy finish w/ irid. neck & base, gold design bordering portrait w/ gold leading, O.L.S. St. Killian, Germany & Beehive marks	250
162	RSP Mold 327 tray, 12" l x 7 1/2" w, Parrots on brown tones w/ gold stencilling, rm	1300
163	RSP Mold 570 11 1/2" h tankard, Swans & Swallows w/ gold highlights, rm (small repair @ top rim)	800
164	RSP "Iris" Mold 628 cracker jar, 5" tall, Winter Season portrait on white satin finish, purple tint & gold trim, rm - Pretty!	1000
165	RSP Mold 343 10" d cake plate, Spring season portrait in Keyhole medallion, deep rose-colored inner border, gold finish around portrait/outer border & decorated w/ small pink roses, rm (touched up gold paint on rim)	950
166	RSP 12" d cake plate w/ blackberry decor, cobalt border highlights white plumes, gold trim, RS Steeple Mark 1 ... pictured in McCaslin pg. 77, 2/2 (2 backside only chips)	80
167	RSP "Medallion" Mold 14 tray, 11 1/2" x 7 1/2", multi-colored rose cluster center, portraits of LeBrun I, Countess Potocka & Madame Recamier decorate medallions on wide cobalt border, gold trim	850
168	RSP Mold 520 9" h demi-tasse coffee pot, Winter Season portrait, irid. Tiffany finish w/ heavy gold work, RSP Mark 7 (replacement lid)	250
169	RSP "Iris" Mold 25 9 1/2" d plate, Mill Scene surrounded by pink poppies, drk. pink highlights, gold stencilling & trim (wom), rm	300
170	RSP "Iris" Mold 25 tray, 11 1/4" l x 7 1/2" w, Summer Season portrait, Tiffany bronze finish on outer border & Iris, rm ... coloring like Gaston 3, Plate 43	750
171	RSP Mold 632 9" h chocolate pot, Cottage Scene, yellow to brown finish w/ gold highlights, rm ... Gaston 3, Plate 409	550
172	RSP 10 1/2" Camation bowl	250
173	RSP 9 1/2" floral vase, satin finish	200
174	RSP Mold 336 9" d plate, Swans on Lake w/castle, rm	200
175	RSP Mold 98 10 1/2" d bowl, Countess Potocka, gold finish ... very similar to McCaslin, pg 160, bottom photo	1100
176	RSP Mold 98 10" d bowl, Countess Potocka, gold finish ... very similar to McCaslin, pg 160, bottom photo (repaired)	500
177	RSP 14" h tankard, Steeple Mold 7, Cottage Scene decor w/ pink/green/orange glow background, RS Steeple Mark 3 ... Gaston 4, Plate 60	850
178	RSP "Carnation" Mold 9 1/2" Lemonade pitcher, red/dk. pink w/ large pink/yellow rose & white daisy décor	550
179	RSP "Iris" Mold 9 1/4" demi-tasse coffee pot, light green w/ pink poppy décor	250
180	RSP 9 1/4" h chocolate pot on elevated scalloped base, Autumn Season portrait on lavender irid. finish, gold stencilling & trim, RSP Mark 7 - Pretty!	2900
181	RSP 3 1/4" h creamer, Black Duck/Pine Trees/Swallows, rm (repaired)	75
182	RSP 8" plate, "The Cage" figural portrait, gold border, rm	450
183	RS Germany 8 1/4" vase, "Rembrandt's Nightwatch," red trim	250
184	RSP Mold 502 cracker jar, 7 1/2" h, Peasant Girl portrait (Tillie) w/ pink roses on green background w/ purple tint at top border	300
185	RSP Mold 203 11" d bowl, Stag Scene, satin finish, rm	550

2006 Convention Auction

LOT#	ItemDescription	Winning Bid
186	ES Germany 9 1/2"d plate, Dice Throwers, wine & drk. blue border, heavy gold accents, Prov. Saxe ES Germany Mark 20 - Great piece!	.800
187	ES Germany 10 3/4" Tankard, glossy finish w/ small flowers in design, Prov. Saxe Mark.	.210
188	RSP Mold 644 3 3/4"h creamer w/ Castle Scene & 5"h sugar w/ lid w/ Mill Scene, white background w/ green shading & gold trim, rm	.150
189	RSP "Lily" Mold 29 10 1/2"d bowl, Lebrun II portrait, small blue enamelled flowers on blown-out shapes around center, gold finish	.2300
190	RSP cake set, Steeple Mold 4: (1) 10 1/2" & (4) 6"d plates, small blue wild flowers on long branches, cobalt to light blue finish w/ gold highlights, RS Steeple Mark 2 (green) ... McCaslin pg. 78, 3/2 & 4/2	.275
191	RSP Mold 96 10 1/2"d bowl, pink poppies & snowball w/ cobalt finish on border, gold stencilling & highlights, rm ... pictured in McCaslin pg. 75, 2/3	.70
192	RSP "Tear-Drop" Mold 39 8 1/2"d plate, Swans on Lake w/water lilies, gold trim	.325
193	RSP Mold 643 9"h chocolate pot, Melon Eaters on shaded green background, rm (repaired lid)	.500
194	RSP "Iris" Mold 25 10 1/2" bowl, red rim w/ yellow shadow iris/ pink poppy/ gold filigree decor, gold lined iris	.250
195	RSP Carnation Mold 11 3/4" Chocolate pot, green/yellow w/ water/silk pink poppy décor	.400
196	Unmarked RSP "Bow Tie" Mold 504 8 1/4" plate, pink/white rose decor, irid. Tiffany gold border	.175
197	RS Poland 10" floral vase w/ cobalt.	.200
198	RSP divided shaving mug	.110
199	Unmarked RSP cobalt craker jar	.550
200	RSP "Lily" Mold 29 12"d plate, Madame Recamier portrait surrounded by gold, shaded rose finish on border w/ shadow flowers, gold stencilling & trim - Attractive plate!	.650
201	RSP Mold 304 7 pc. berry set, Old Man in the Mountain scene, gold stencilling & trim: 11"d master bowl & (6) 5 1/2"d individual sauces (1 w/ hairline), rm	.650
202	RSP 6 7/8"h pillow vase, Mill Scene, gold handles, rm	.400
203	Unmarked RSP 10 1/4" bowl, Semi-Nude Lady by a Stream portrait	.350
204	RSP 8" vase, Countess Potocka, irid. Tiffany purple, lots of gold, rm	.600
205	RS Poland 5"h tea pot, Pheasant scene	.170
206	RSP 7 1/4" tray, Mill Scene, rm	.125
207	RSP footed Tea set, poppies w/ blue background, Steeple Mark	.200
208	RSP Cobalt multi-colored floral dresser tray	.500
209	Unmarked RSP (13) piece Childs Chowder set, Daisies	.100
210	RSP Mold 520 12"h chocolate pot, LeBrun II portrait, lavender to green Tiffany finish, gold stencilling & trim - Pretty!	.925
211	RSP "Carnation" Mold 28 11"d bowl, Autumn Season portrait on cream background w/ peach tint, gold trim, satin finish, rm (repaired)	.500
212	RSP Mold 343 12" cake plate, multi-colored florals on cobalt w/ gold stencilling & trim ... McCaslin pg. 80, 1/2	.200
213	RSP 10"d bowl w/ scalloped border & lightly embossed floral decor on border & down sides, multi-colored flowers, cobalt center & sides	.80
214	RSP 12" cake plate, Steeple Mold 4, small blue wild flowers on long branches, cobalt to light blue finish w/ gold highlights, RS Steeple Mark 2 (green) ... pictured in McCaslin pg. 78, 1/3	.110
215	RS Germany 12"d cake plate, blue & cobalt floral on white w/ cobalt border, gold trim, green mark ... pictured in McCaslin, pg. 68, 1/2	.75
216	RSP 7 1/2"h vase, Spring Season portrait w/ heavy gold work & dbl. handles, irid. maroon Tiffany finish, RSP Mark 7	.650
217	RSP 10 1/2"d bowl w/ Peasant Girl portrait, four dome shapes seperated by pierced sections, cream background w/ lt. green trim & gold stencilling highlights/flowers circling center w/ green irid. Tiffany finish	.850
218	Unmarked RSP "Lily" Mold 10 1/2" bowl, deep pink w/ yellow & pink rose decor, gold lily petals	.125
219	RSP Mold 94 10 1/4" bowl, 7 Cobalt Iris in border, cobalt sections on edge, pink poppy decor - Beautiful Color!	.675
220	10 1/4" Cobalt/Green 10 Iris bowl, lt. blue iris w/ gold petal falls, pink poppy decor (sm. chip on back tip of one iris)	.525
221	RSP "Medallion" Mold 14 10 1/2"d bowl, Snowbird scene center decor w/ medallion scenes of Old Man in the Mountain/ Shepherd I/ Snowbird scene, black inner border overlaid w/ gold designs, rm - Extremely nice!	.2900
222	RSP Mold 208 11 1/2"d cake plate, Gibson Girl portrait w/ orange & white poppies, rm ... Gaston 3, Plate 163 (possibly repaired)	.275
223	RSP Mold 643 11" Chocolate pot, large pink rose w/ yellow rose on back, gold trim at base, rm ... similar to Gaston 3, pg. 145, plate 428 (prof. repair on lid)	.100
224	RSP Mold 572 Chocolate set w/ (6) cups & saucers, white w/ gold trim	.275
225	RSP "Daisy" Mold Child's tea set, Snowbird Scene: tea pot, creamer & sugar, (4) cups & saucers - Very Nice!	.2500
226	RSP 9"h cobalt vase, Cottage Scene, gold stencilling & gold top rim/base & dbl. handles, rm	.350
227	RSP Mold 633 cracker jar, 5 1/2"h, Barnyard Animals w/ Swallows (substitute lid w/ pheasant), rm	.425
228	RSP "Nut" Mold 10 1/2" bowl	.160
229	RSP 11 1/2" open-handed cake plate w/ jewels	.50
230	RSP "Iris" Mold mug w/ underplate	.85
231	RSP 9 1/4" "Fleur-De-Lys" Mold bowl, Fall Season portrait, rm	.525
232	Unmarked RSP 11" bowl, cobalt w/ lilacs, fold-over mold	.400
233	Unmarked RSP 11" Mold 113 bowl, Snowbird Scene - Rare mold!	.900
234	RSP Mold 98 10"d cake plate, Cottage Scene on brown to yellow background, gold stencilling & trim, rm	.275
235	RSP "Lily" Mold 29 9 1/4"d bowl, Potocka portrait, bronze Tiffany finish, gold stencilled inside border	.550
236	RSP (3) piece fld. tea set, Lily of the Valley, Tiffany decor, satin finish	.300



2006 Convention Auction



LOT#	ItemDescription	Winning Bid
237	Royal Vienna Germany Art Nouveau 9" vase, pink roses, irid. Tiffany decor, marked RV Germany	300
238	Beautiful BLACK "Point & Clover" Mold 11" open handled plate, black panels w/ white floral insets/gold jewels, multi-floral center decor, unmarked	350
239	RSP 11" bowl, Tapestry finish, purple domed sections w/ white flowers, (6) floral medallions, pink/yellow rose decor, satin finish - Pretty & Unusual!	200
240	RSP "Camation" Mold 11 1/2" bowl, green/yellow border w/ pink & white rose décor	250
241	RSP "Camation" Mold 8" dining picture	500
242	RSP "Iris" Mold 10 1/2" cobalt bowl	1200
243	RS Germany 9 3/4" open handled plate, cotton plant	.75
244	RSP Medallion Mold 14 11 1/4"d cake plate, Old Man in the Mountain on blues, rm ... Gaston 1, Plate 61	425
245	RSP "Lily" Mold 29 10 1/2"d bowl w/ 10 petal feet, LeBrun I portrait, small blue enamelled flowers on blown-out shapes around center, gold finish ... Gaston 3, Plate 71 - Very Pretty	950
246	ES Germany shaving mug, Castle Scene, marked Depon	.25
247	Unmarked RSP (3) piece Tea Set, Petite red & white Roses, satin finish, miniature feet & blue background	450
248	RSP sugar basket	245
249	RSP "Iris" Mold Chocolate pot, satin finish	300
250	RSP 12"d cake plate w/ dbl. pierced handles, irregular scalloped border (similar to Mold 279), Gibson Girl Portrait on white satin finish, leaf chain & gold stencilling decor, rm	400
251	RSP Mold 664 9"h coffee pot, Madame Recamier portrait w/ purple flowers on reverse side, green tinted finish around portraits, gold trim ... Gaston 3, Plate 472	1250
252	RSP "Lily" Mold 29 10 1/2"d bowl, LeBrun I portrait on green tones w/ gold trim	475
253	Unmarked RSP Tea Strainer	.30
254	RSP "Iris" Mold 10 1/2" bowl	200
255	RSP "Iris" Mold 628 tea set: 5 1/2"h teapot (repaired top rim & lid), 3 3/4"h creamer (hairline) & 4 1/2"h sugar w/ lid (lid repaired), Winter Season portrait w/ irid. Tiffany border, rm	250
256	RSP "Icicle" Mold 7 10 1/4"d cake plate, Turkeys & Pheasant on green/blue shaded background w/gold trim, rm	800
257	RSP floral border mold 10 1/2"d bowl, Countess Potocka, ind. white sides decorated w/ small flowers, gold stencilling & border ... Mold same as Gaston 4, Plate 173 (small underside rim chip)	1000
258	RSP Mold 633 9 1/2"h chocolate pot, Swans w/ Evergreens, rm (repaired handle)	200
259	RSP Mold 182 9 1/2"d bowl, Victorian Vignette decor in center & on border, lt. green background w/ blue outer border, gold trim, rm (crack)	300
260	RSP 9" two-handled vase, Dice Throwers, gold handles, RS Suhl Mark - Very Rare Mold	475
261	Unmarked 12 1/2" x 5 1/2" celery dish, "Lady with Comb/Medallion in Hair," marble finish w/ gold - Very RARE Seldom seen portrait!	550
262	Unmarked 17" um w/ lid, Man & Woman w/ Cherubs, Allegorical/Mythological scene, yellow w/ heavy gold bird-shaped handles & square base	200
263	Unmarked RSP 10 3/4" vase, floral decor - Perfect shape!	.70
264	Germany 7 1/2" jar, Castle scene, green background, excellent condition	175
265	Unmarked 9" Chinese Pheasant Vase - Beautiful	160
266	RS Poland 12" two-handled vase, red/green RS Poland mark, Nuchmache m. Rembrandt mark (in long hand) - Very Nice	200
267	ES 11" vase, Woman Holding Flowers Scene, gold handles, ES Ellipse Green Mark (slight wear on handles)	325
268	8" plate, Old Man in the Mountain, RS Tillowitz Silesia mark (slight wear)	160
269	ES Germany 4" mug, Goddess of the Sea, Prov. Saxe ES mark	110
270	Pr. of unmarked 8 1/2" Rembrandt's "Nightwatch" vases (two different scenes) - Nice set!	140
271	Unmarked RSP 5 1/2" x 6 1/2" w biscuit jar, Swans Scene	225
272	RSP 10"d plate, Cottage Scene, rm (slight wear)	170
273	Pr. of RS Poland 8 1/4" vases, rich brown background w/ light pink rose decor, cobalt around base, lots of gold accents	850
274	Unmarked RSP berry bowl set: 11 1/4" master bowl, 5 1/2" sauces, white background w/ bright gold leaves around rim, snowball flowers	110
275	RS Germany "Rosebud Mold" Chocolate pot, floral w/ green & tulip decor, Steeple Mark	100
276	RS Germany Mold 3 8 1/4" vase, stylized pink roses w/ pearlized luster, RS Germany w/ Tillowitz over mark	40
277	RSP Mold 572 (3 pc.) tea set, lots of gold on white background (sm. chip on edge of creamer)	80

Thanks for attending!

